

反比例のグラフ1

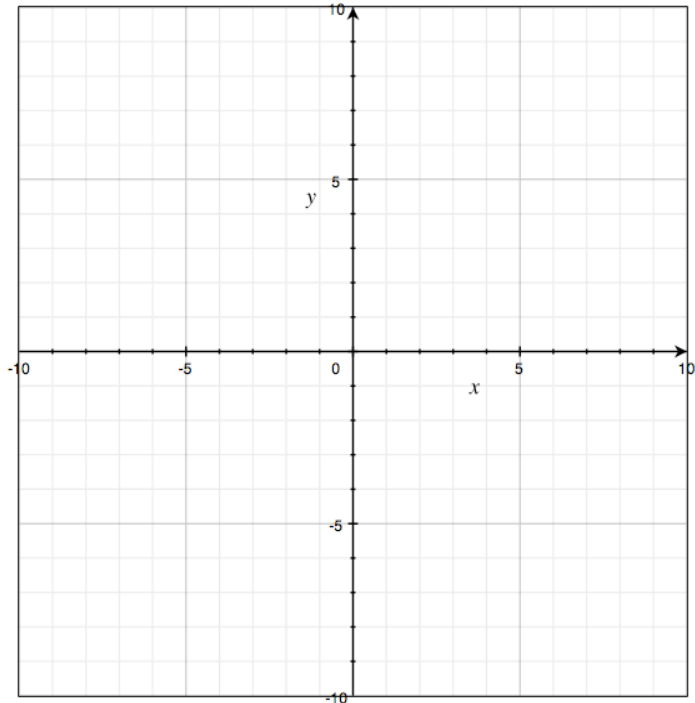
1. 次の反比例のグラフをかきなさい。

(1) $y = \frac{4}{x}$

(2) $y = -\frac{12}{x}$

(3) $y = \frac{15}{x}$

(4) $y = -\frac{20}{x}$



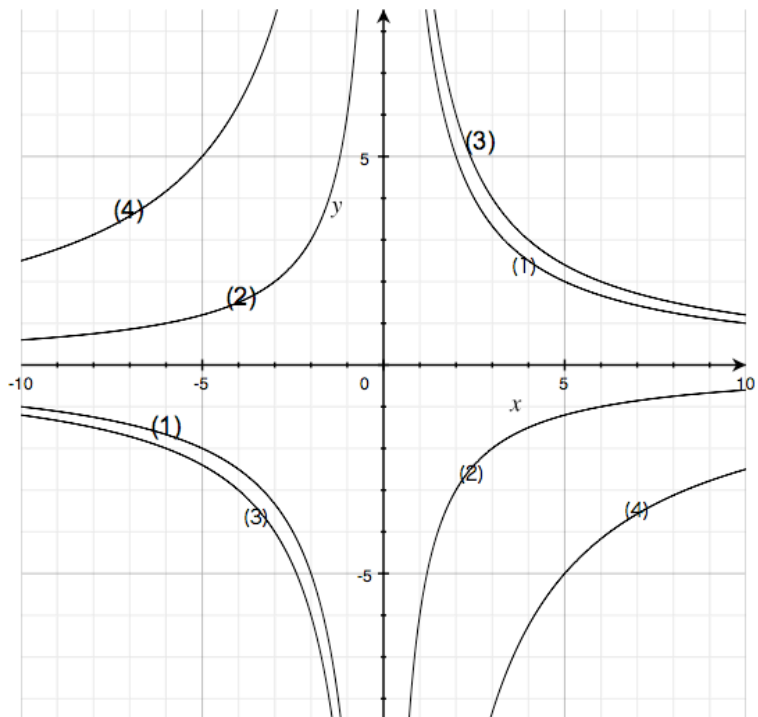
2. 次の反比例のグラフの式をかきなさい。

(1)

(2)

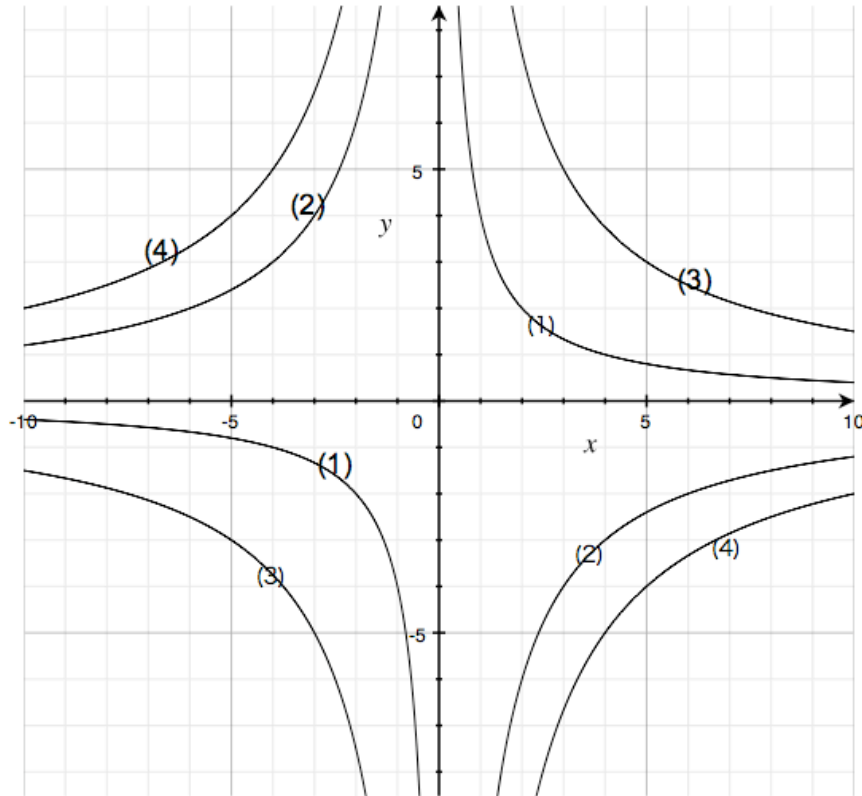
(3)

(4)



解答

1.



2.

(1) $y = \frac{10}{x}$

(2) $y = -\frac{6}{x}$

(3) $y = \frac{12}{x}$

(4) $y = -\frac{25}{x}$